



542 3<sup>Rd</sup> Street, Lake Elsinore, CA 92530

**TEL: 951-245-8669, FAX: 951-245-5481**



## CHEVROLET CAMARO 1993-2002

*NOTE: THE DOOR, APRON, AND FENDER WILL NEED TO BE MODIFIED.*

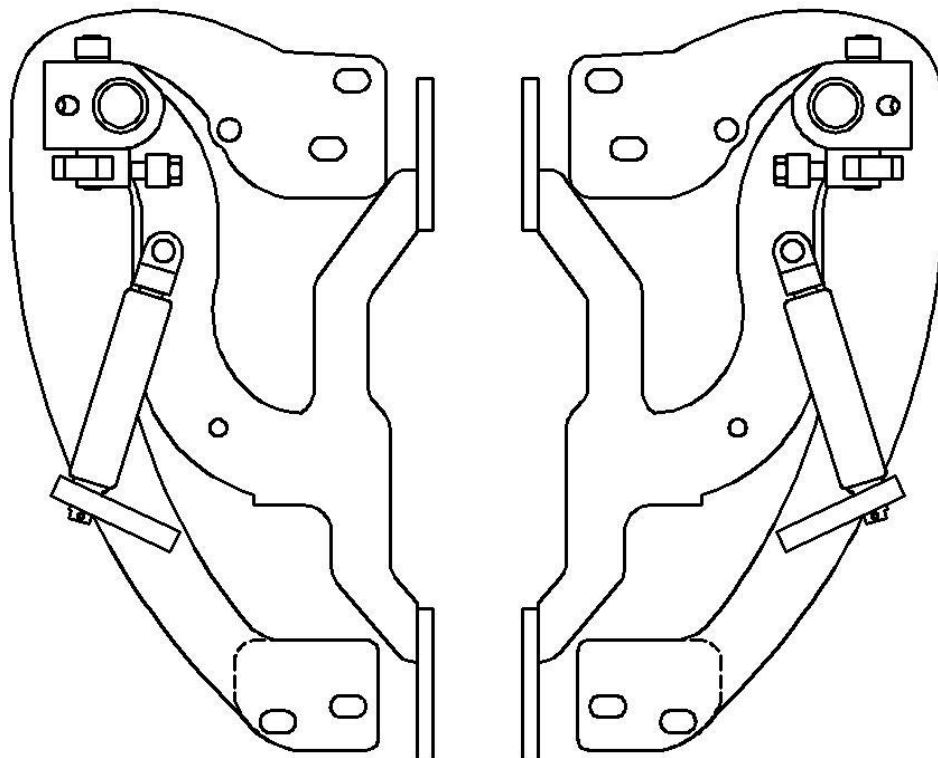
U.S. PATENTS

#6,808,223; #6,845,547; #7,140,075; #7,059,655

PATENTS AGGRESSIVELY ENFORCED!

**PLEASE CAREFULLY READ ALL INSTRUCTIONS BEFORE ATTEMPTING TO INSTALL THIS PRODUCT.**

**FOR QUESTIONS PLEASE CONTACT US AT (951) 245-8669**



**THIS KIT INCLUDES:**

➤ 16 M8-1.25X30MM BOLTS WITH WASHERS	➤ RIGHT AND LEFT HINGE ASSEMBLY
➤ 2 SHOCKS 720 PSI	➤ 2 SHOULDER BOLTS
➤ 2 PINS	➤ 2 WIRES AND 4 WIRE CONNECTORS

**TOOLS REQUIRED FOR INSTALLATION:**

	➤ AIR RACHET, GRINDER AND CUTTER.
	➤ 10MM, 11MM, 12MM, 13MM, 14MM, 15MM SOCKETS, AND EXTENSIONS.
	➤ FORK AND PHILLIP'S SCREW DRIVER
	➤ SPACERS FOR THE DOOR GAP.
	➤ 3/16 ALLEN WRENCH
	➤ 1/4 TORX BIT
	➤ 9/16 WRENCH
	➤ LOCKTITE RED

**(Note: The pictures on the manual are for reference only they may not match your vehicle.)**

1) Disconnect the battery.

*Note: Some of these models are equipped with THEFT-LOCK audio systems, see your manual or contact your dealer on how to disable it.*

2) Headlight housing removal:

Open the hood and remove (1) 10mm nut securing the headlight, after removing the nut you will be able to remove the headlight housing by pulling straight up. Carefully disconnect the electrical connectors.



3) Remove the fender:



Remove all fasteners on wheel well.

*Note: if your vehicle is equipped with a skirt you will have to remove it.*

With the headlight removed you will have access to (3) 11mm nuts and this will release the fender from the bumper.

Note: There is also an alignment pin (red arrow) attached to the fender you will have to pull away from the bumper to release the fender.



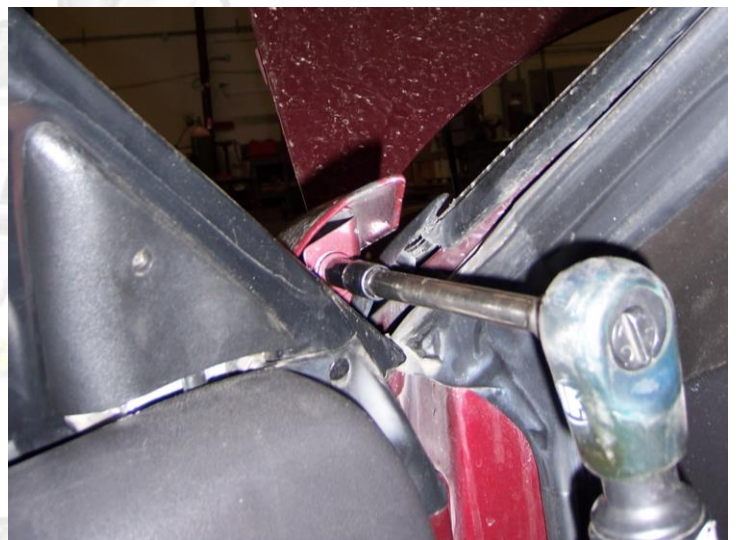
Pull on the wheel well and remove (1) 10mm bolt located by the factory hinges.



Remove the (2) 10mm fender-to-body bolts from below the vehicle at the front rocker panel area.



Open the door and remove (1) 10mm bolt located between the windshield pillar and the factory door hinges.



Remove the mounting bolts along the upper edge of the fender and carefully remove the fender.

#### 4) Modify Apron:

In order for the new Vertical Door Inc. system to sit properly you will have to cut the apron. After cutting the apron use a grinder to remove any sharp edges.

Use a 10mm bolt to remove the fender hold down as showed.



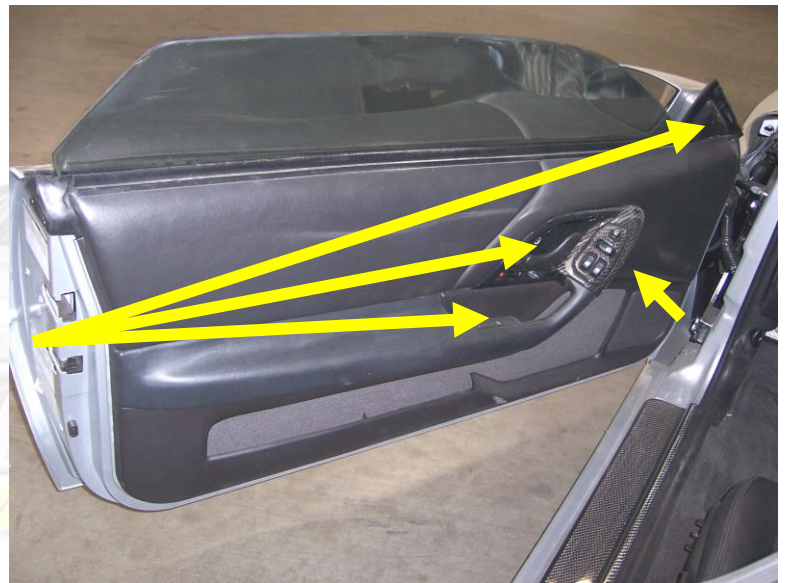
#### 5) How to gain wire slack:

Wire slack is needed for the new Vertical Door Inc. system to fully open, wire slack will be gain from inside the door.

#### Door panel removal:

You will have to remove the door panel to gain wire slack.

Remove the covers and the screws.

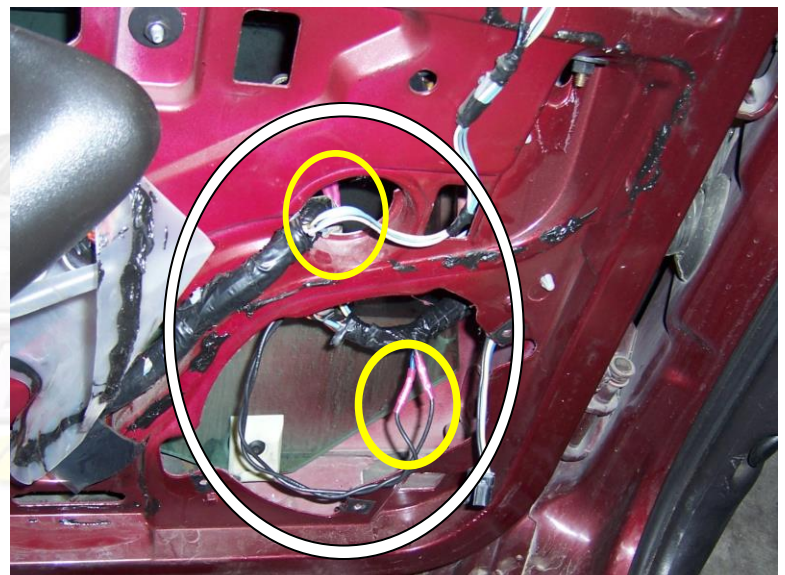


Note: on models with power windows use the fork to pry the control panel from the door and disconnect the wire harnesses.

Once all of the screws are removed, detach the trim panel from the door, working around the door with a plastic trim panel tool to disengage the clips, disconnect any electrical connectors and remove the trim panel from the vehicle by lifting it up and away from the door.

With the door panel off remove the speaker, inside the hole you will find a plastic clip that holds down the wires, remove the clip these will give you the needed wire slack.

NOTE: on models with power windows you will have to add (2) extra cables as showed.



**6) Preparation for factory hinge removal:**

Close the door and use painter's tape to secure the door to the body, in preparation for factory hinge removal.



Use a 13mm wrench to remove the (4) bolts securing the factory hinges to the apron and a 15mm wrench to remove the (4) bolts securing the factory hinges to the door.

**Insert spacers after removing the factory hinges.**

*Hint\*(You can make your spacers out of paint sticks and about 8-10 turns of blue painters' tape)*

*Hint\* Use painter's tape to protect the edges of the fenders and the doors.*

**7) Install your new Vertical Doors Inc. system:**

Make sure the VDI sits flat against the apron.

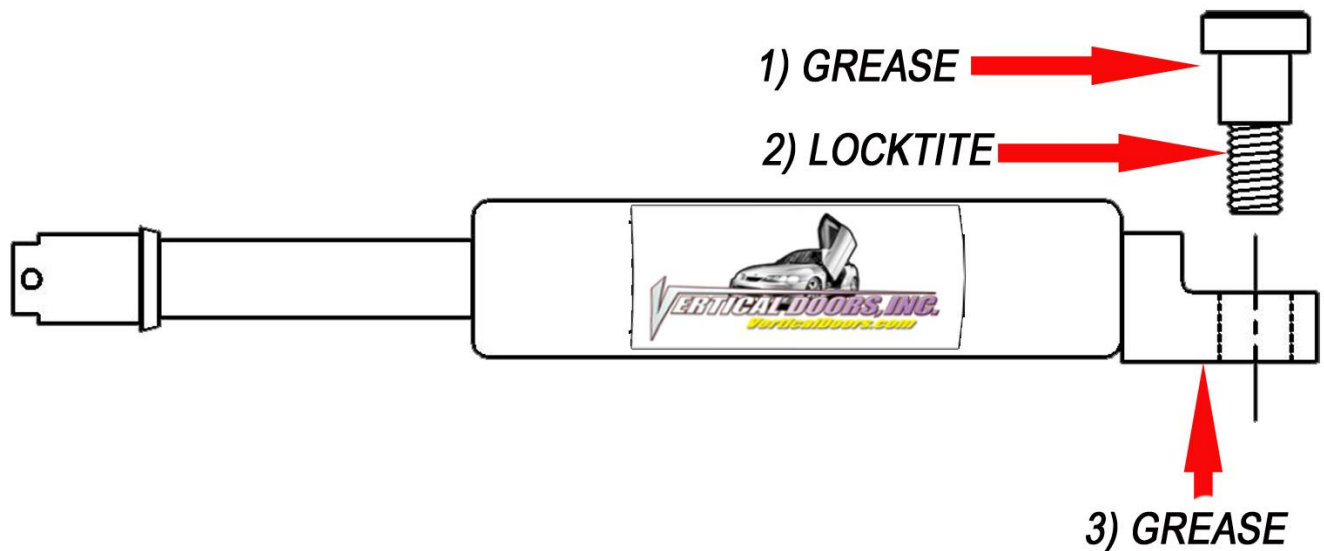
Use a 15mm wrench to secure the VDI system to the door and a 14mm Wrench to secure the VDI system to the apron.

Cut the factory wire boot in half. The half that is going to the door will be removed and aftermarket wire look will be added to protect exposed wires.



*Hint\* Tighten the bolts on the door first then the bolts on the apron.*

**VERTICAL DOORS, INC.**  
VerticalDoors.com

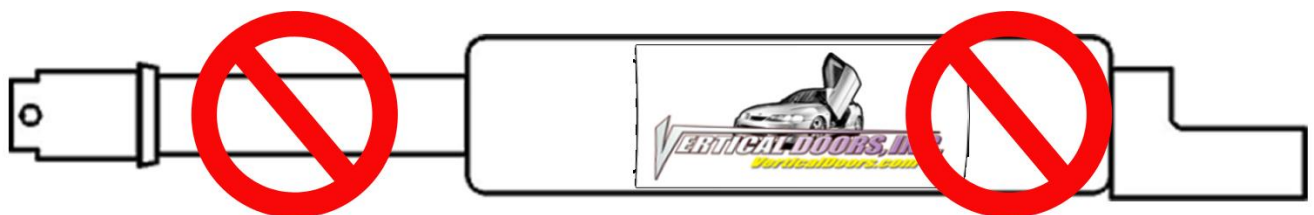


**\*IMPORTANT STEP: DO NOT SKIP THIS STEP. THIS STEP IS CRUCIAL IN YOUR INSTALLATION PROCESS, IF THIS STEP IS NOT COMPLETED WHEN INSTALLING THE VERTICAL DOOR KIT; ALL WARRANTIES ARE VOIDED, AND MAY CAUSE FUTURE PROBLEMS WITH YOUR VERTICAL DOOR SYSTEM.**

**1ST, make sure you put grease on the body of shoulder bolt where the arrow is pointing.**

**2ND, make sure you put red Locktite, where the arrow is pointing, on thread of shoulder bolt.**

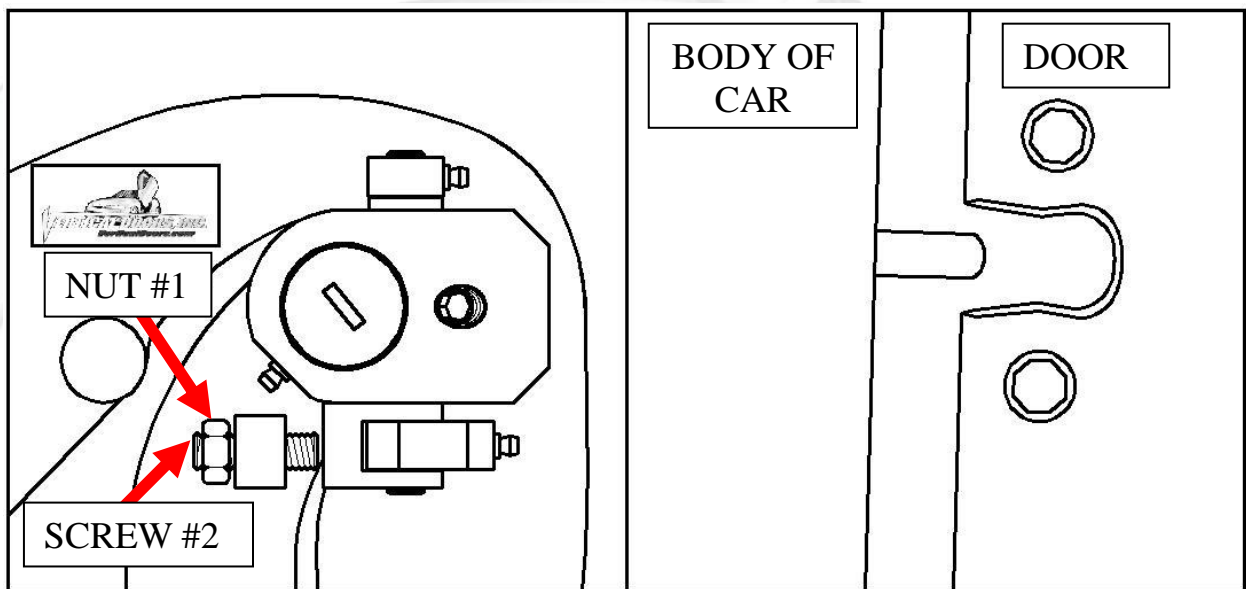
**3RD, make sure you put grease on the bottom side of the shock end.**



**WARNING! THE USE OF ANY TYPE PLYERS, PAINT OR FOREING MATERIALS ON THE SHOCK'S BODY OR SHAFT WILL VOID THE WARRANTY.**

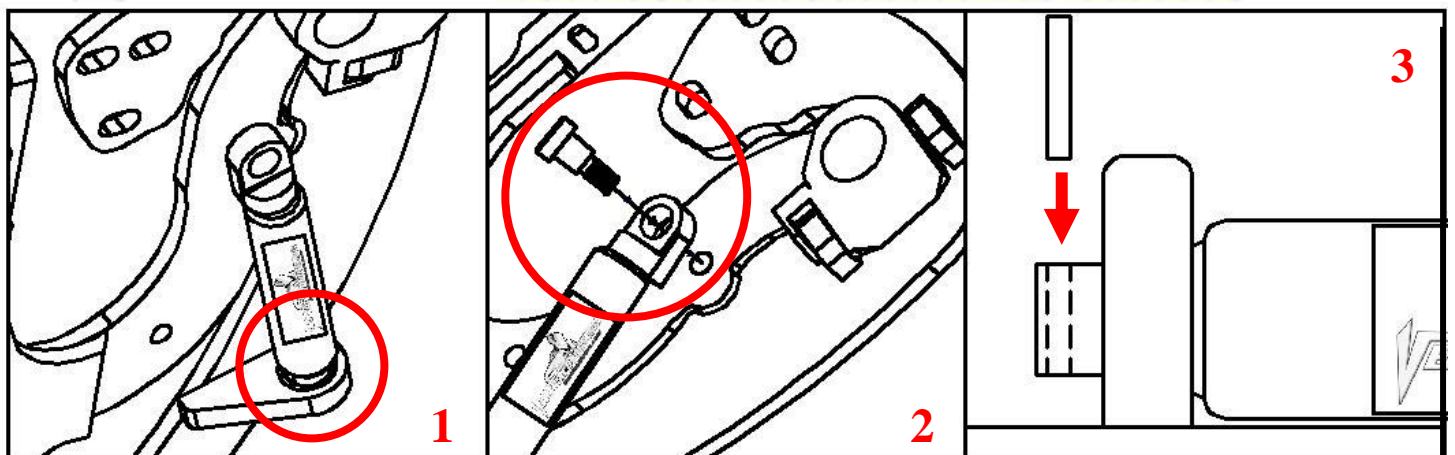


8) Once hinge is locked in place, break nut #1 then turn Allen set screw #2 on fig until it hits the block then open the door and continue to adjust until the door matches with the striker, open and close door making sure it closes like factory.



*Hint\*(leave #1 nut loose until shock is installed Allen set screw will have to be re-adjusted after shock is installed.*

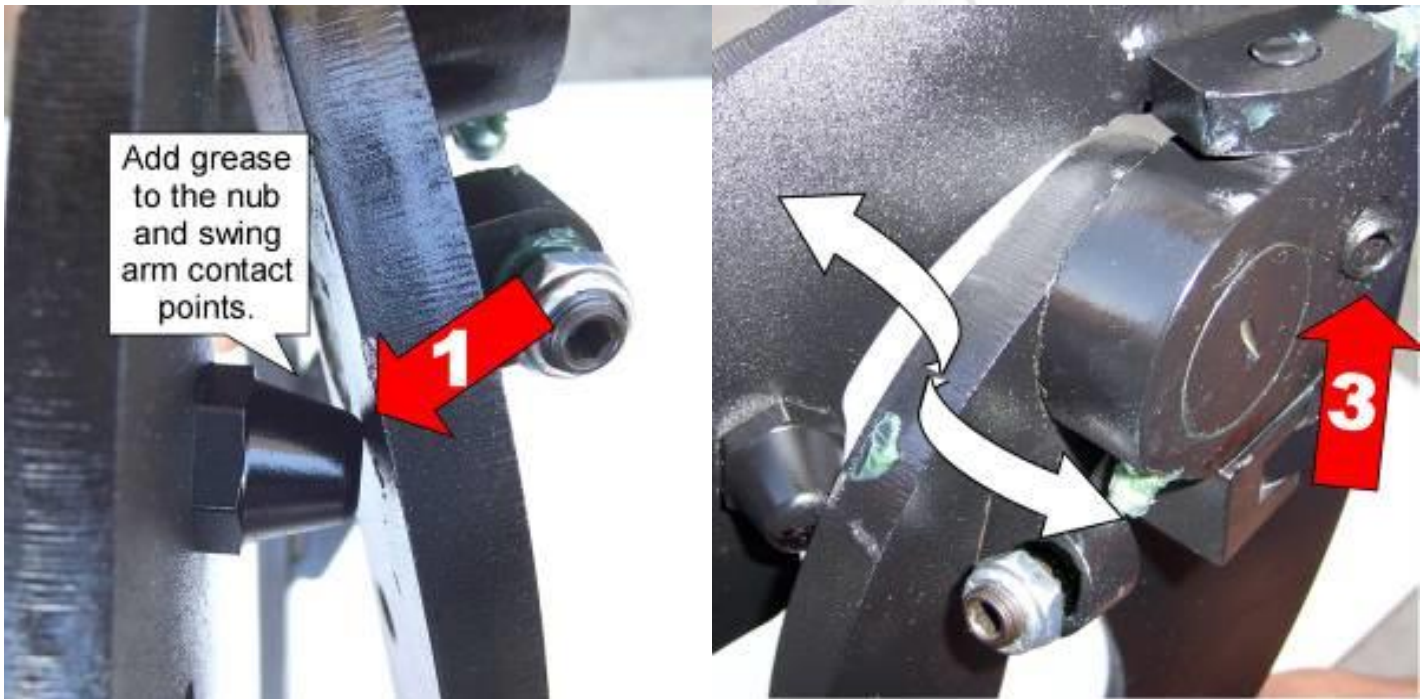
9) Install the shock.



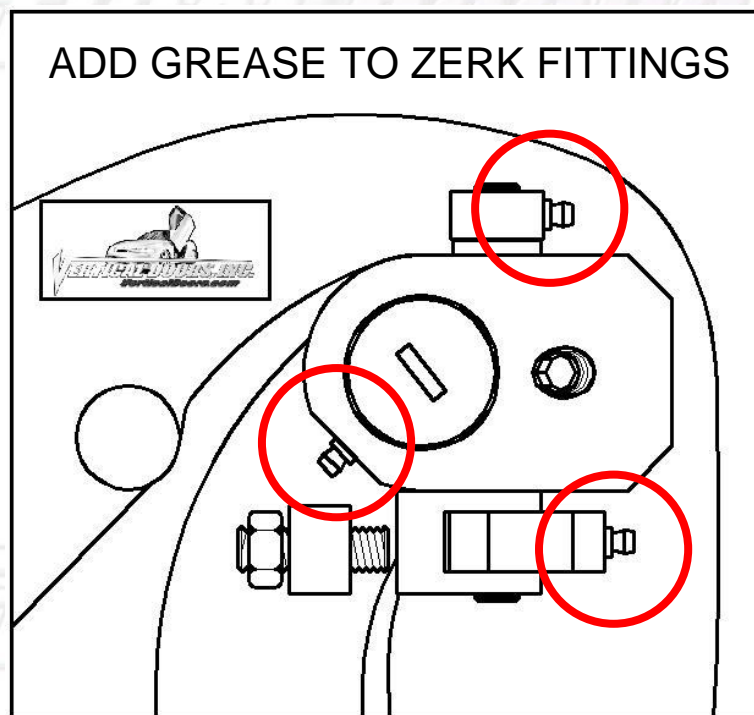
*Hint\* (You will need a helper to raise the door). (Slip the spherical rod mount into the spherical ball bearing (1). Using a 1/4 Allen wrench, tighten the screw into the swing arm (2). After the shock is installed secure it by installing the pin in the bottom shock end (3).*



**10) Adjust door opening set screw #3 clockwise until distance between nub and swing arm is enough so that the swing arm moves up and down freely.**



*Hint\* (Fine tune the Allen Adjustment screw (#2) to realigned striker with door. After the door is align test door by opening and closing, lifting and lowering door several times.*

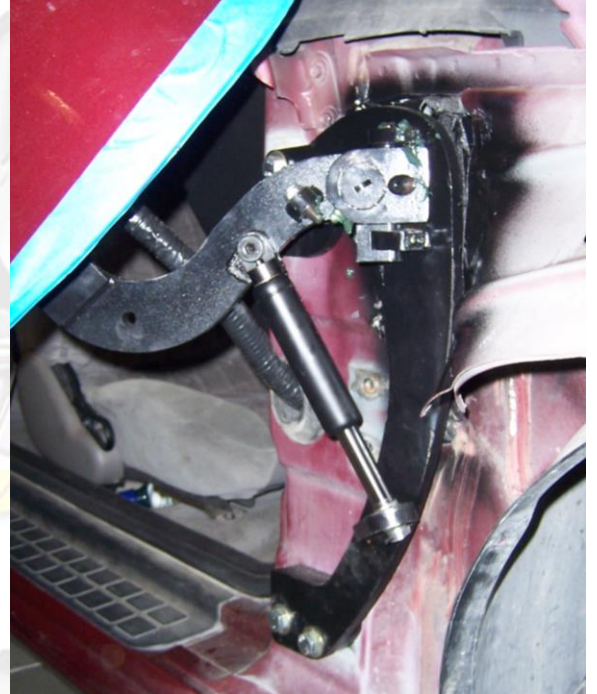


**Note: Do not install fender until the adjustment of the door is accurate, and the set screw is tightly secure. Also make sure everything is tight, adjustment is set and everything is Locktite.**

## 11) Modify wire layout:

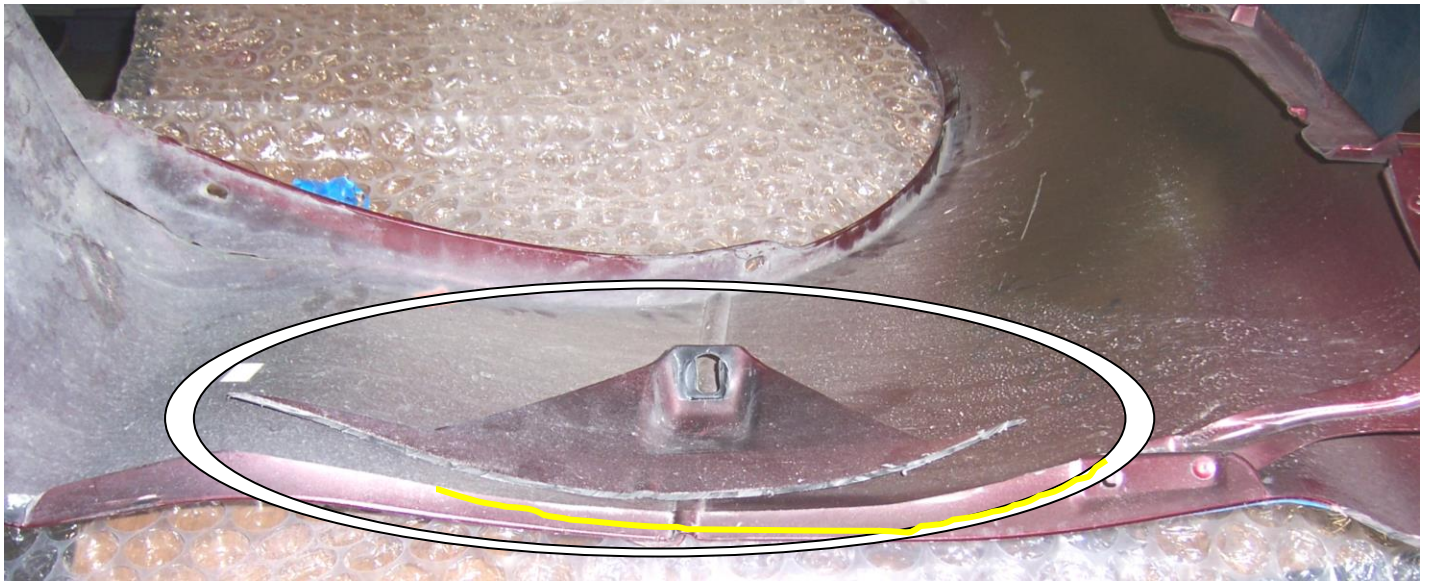
After gaining the extra wire slack, you will be able to lift the door fully.

NOTE: Check the way the wires are layout.

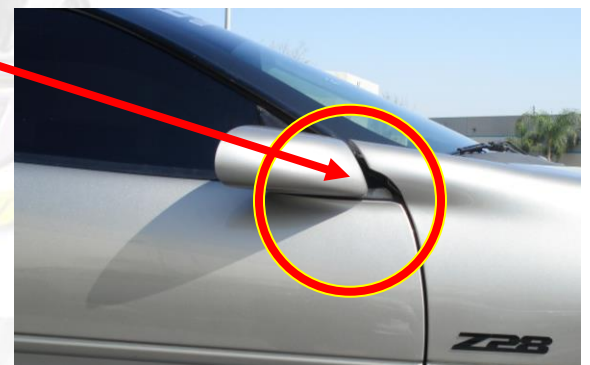


## 12) Modify fender:

You will have to cut the inner lip of the fender as showed. Use a grinder to remove any sharp edges.



Grind the bottom side of the fender by the mirror. The included paper template is for reference only.



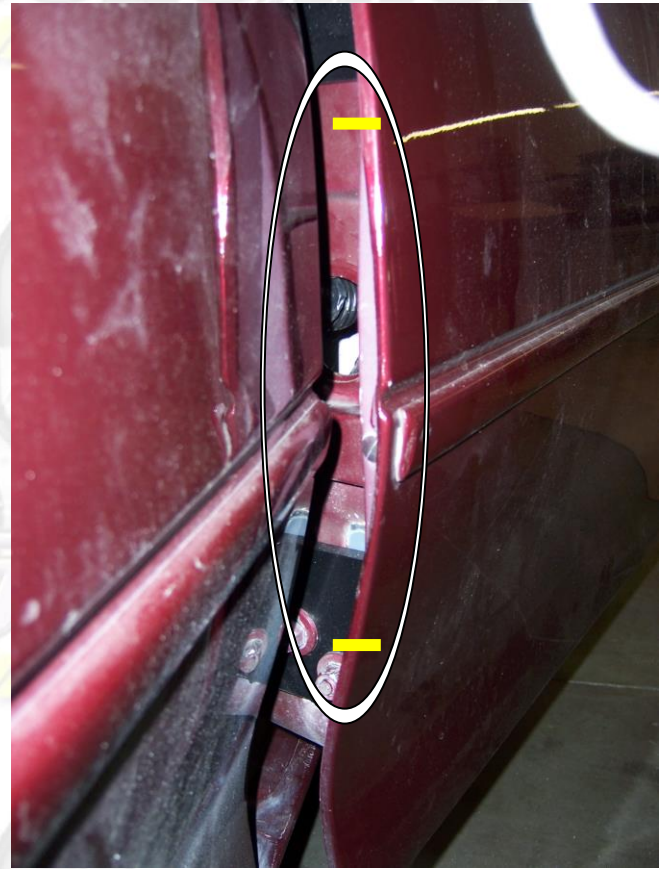
You will have to trim about a 1/8" of the trim for the door to open properly.

**13) Modify the door:**

You will have to cut the corner of the door as showed.



You will need extra clearance for the door to open properly, use a sander on the inside the door edge to gain the clearance.



**14) Close the door and Replace the fender, by reversing step 2 and 3.**

*Hint\*(Make sure the electrical wires don't get pinched enough to damage wires)*

NOTE: your vehicle should look like the pictures when finish.



**15) Follow the same steps for the other side.**

Thank you for the purchase of the:  
**CHEVROLET CAMARO**  
**1993-2002**

***VERTICAL DOORS INC. SYSTEM***

*Simply Uplifting*



**NOTE:**

Vertical Doors Inc. assumes no responsibility for any damages caused by improper installation